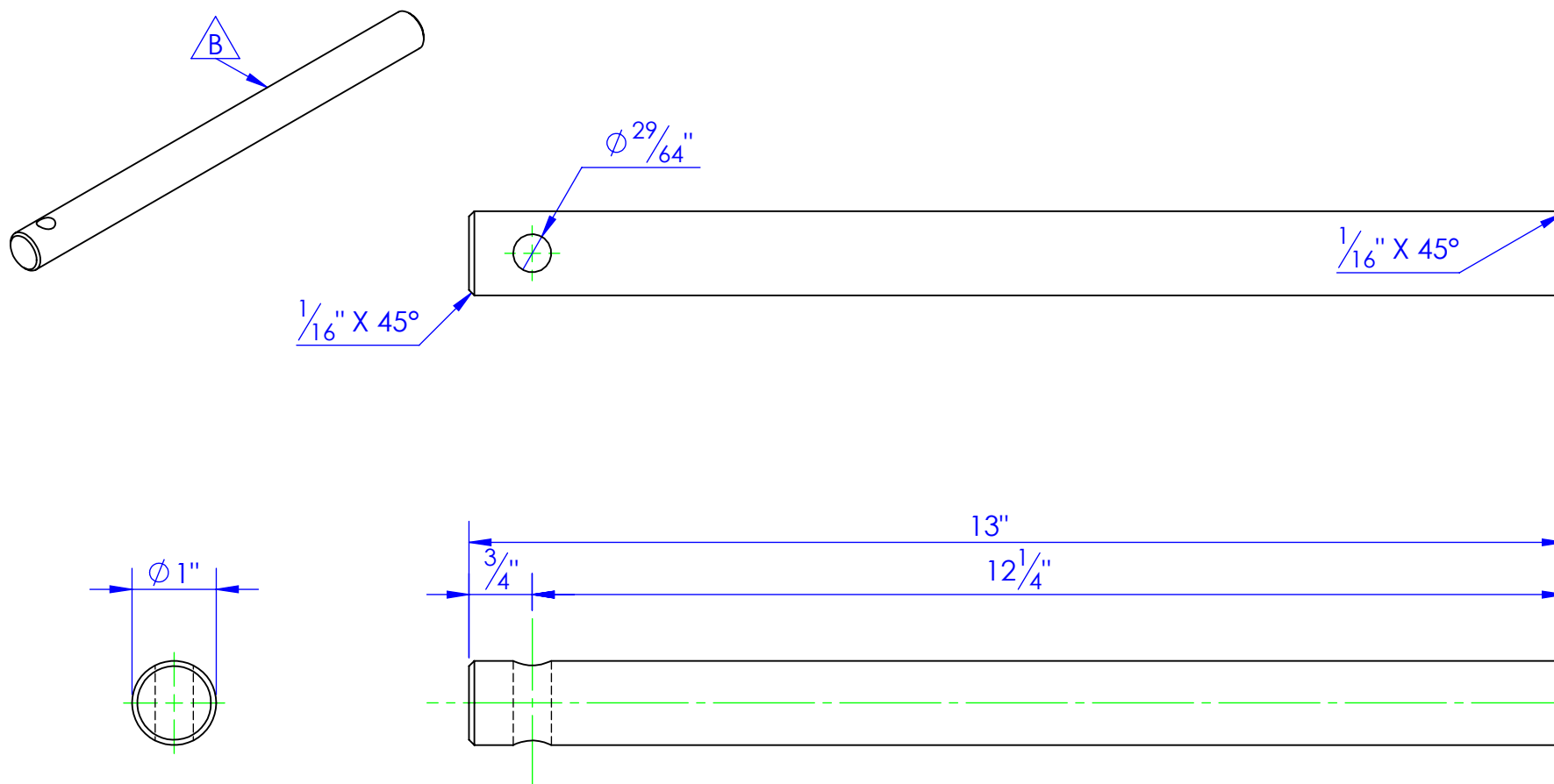


PART NUMBER	DESCRIPTION	Material
FP-SP100A	SHAFT, SPINNER, SP100	CF ANN 4142 RDx 12

REVISIONS			
REV.	DESCRIPTION	DATE	APPROVED
B	UPDATED TO MATCH 3D MODEL	12/17/2012	



**PROPRIETARY AND CONFIDENTIAL**  
THE INFORMATION CONTAINED IN THIS  
DRAWING IS THE SOLE PROPERTY OF TRIPLE  
C INC. ANY REPRODUCTION IN PART OR  
AS A WHOLE WITHOUT THE WRITTEN  
PERMISSION OF TRIPLE C INC. IS PROHIBITED.

DIMENSIONS ARE IN INCHES TOLERANCES: FRACTIONAL $\pm 1/16$ ANGULAR: MACH $\pm 1$ BEND $\pm$ TWO PLACE DECIMAL $\pm 010$ THREE PLACE DECIMAL $\pm 005$	
MATERIAL	CF ANN 4142 RDx 12
DO NOT SCALE DRAWING	

NAME	DATE
DRAWN <b>HEATH</b>	12/17/2012
PART #	FP-SP100A
ASM #	
COMMENTS:	
SHAFT, SPINNER, SP100	

P.O. BOX 248,  
SABETHA, KS 66534

**TRIPLE C**  
INC.

SIZE <b>A</b>	DWG. NO. <b>90-1605 B</b>	REV. <b>B</b>
SCALE: 1:2	WEIGHT: 2.85	SHEET 1 OF 1